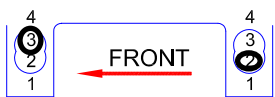


Setup Sheet

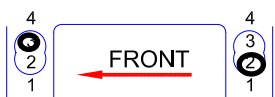
Front Suspension

Caster 2 deg Downstops 11 mm
 Kickup Yes Anti-roll Bar No
 Toe-in 0 deg Toe-out _____
 Camber -1.5 deg
 Ride Height 5mm
 Wheelbase center 3 2
 Adjustment



Rear Suspension

Anti-squat Yes Downstops 10 mm
 Toe-in 3 deg Anti-roll Bar No
 Camber -2 deg
 Ride Height 5mm
 Wheelbase center 3 2
 Adjustment



Others

Front Tires LRP VTEC Compound 24R Insert LRP White Wheel LRP VTEC
 Rear Tires _____ Compound _____ Insert _____ Wheel _____
 Battery Placement Back / Front Other _____
 Topdeck Stiff / Flexible Other _____
 Special modifications Long derlin whisbones, mid. motor, widht: front 187mm and rear 188mm

Drivetrain 1-Belt / 2-Belt Front Drive STD / One-way Spur / Pinion 78 T / 23 T
 Motor Corally 12*1 gold Brush Corally Q-brush Spring Corally gold
 Radio Sanwa M8 (st expo -10%) Servo Sanwa ERG-VR ESC Nosram DP (3,1,0)
 Body Protoform Stratus Wing std.

Tire Additive LRP Top Traction Lead Weights 60 g

Track Conditions

Surface Smooth
 Traction Low / Medium / High
 Composition Carpet
 Temp. +22 C

Driver: Simo Ahoniemi

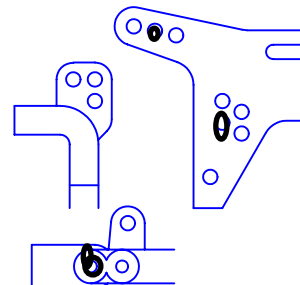
Track / City: Eppelheim

Event: LRP TCM'03 Date: 6.4.2003

Front Shocks

Body Mugen
 Piston # 1-hole
 Oil 30 WT
 Spring TC3 Blue
 Ackermann Setting

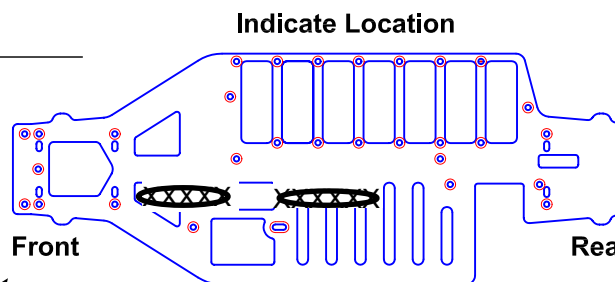
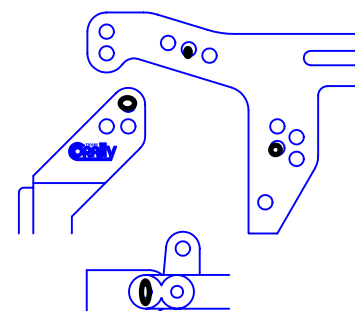
Shock Mount & Camber Link



Rear Shocks

Body Mugen
 Piston # 2-holes
 Oil 30 WT
 Spring TC3 Blue

Shock Mount & Camber Link



Race Comments

Main A Finish 3. Qualifying Pos. 8.
 Notes _____